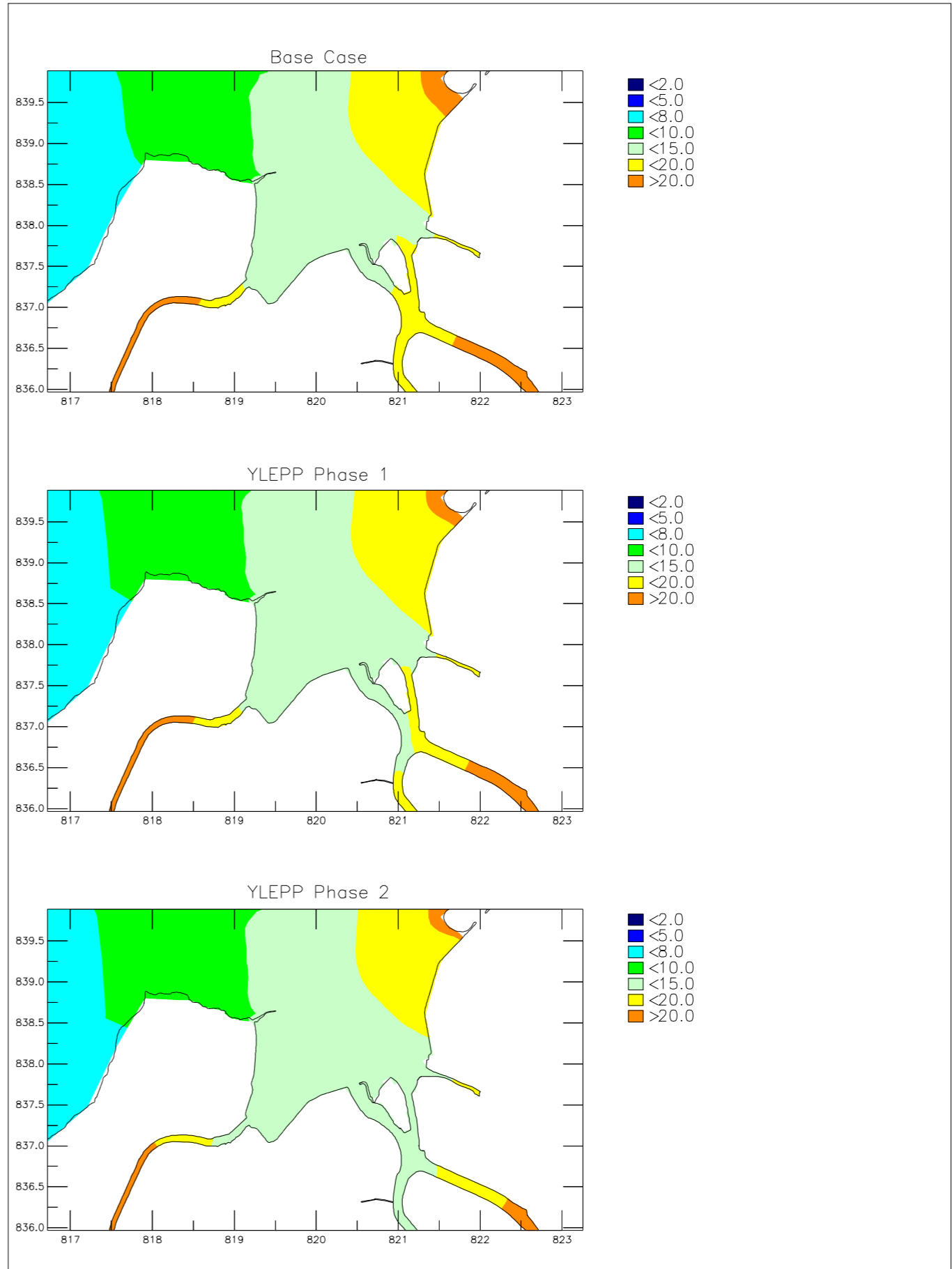
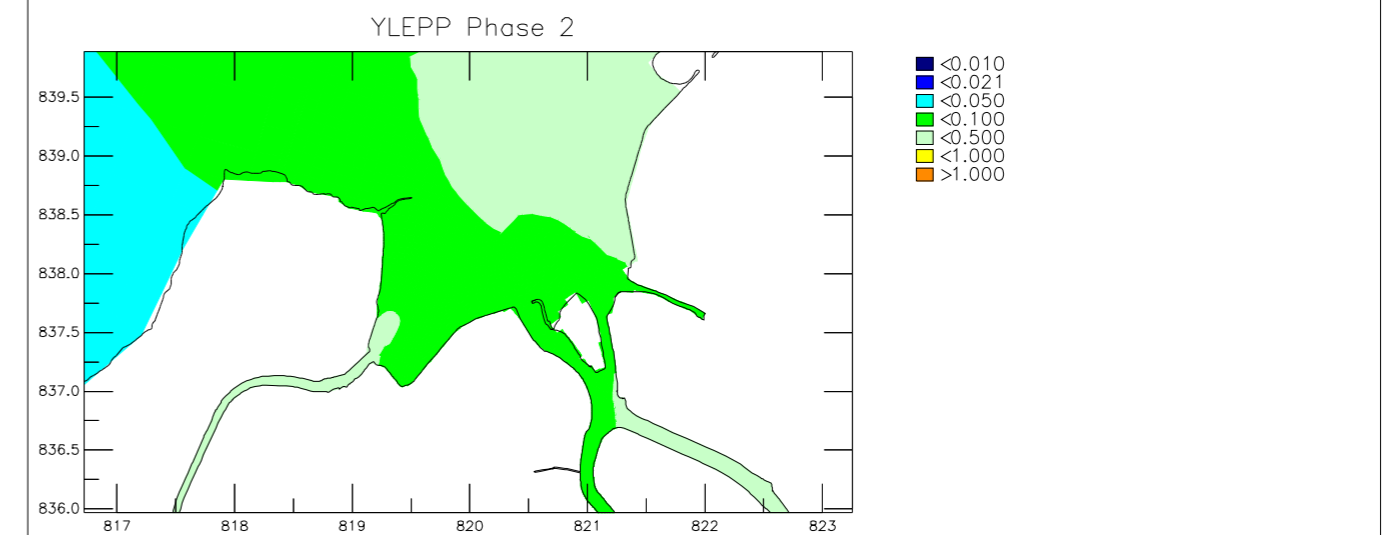
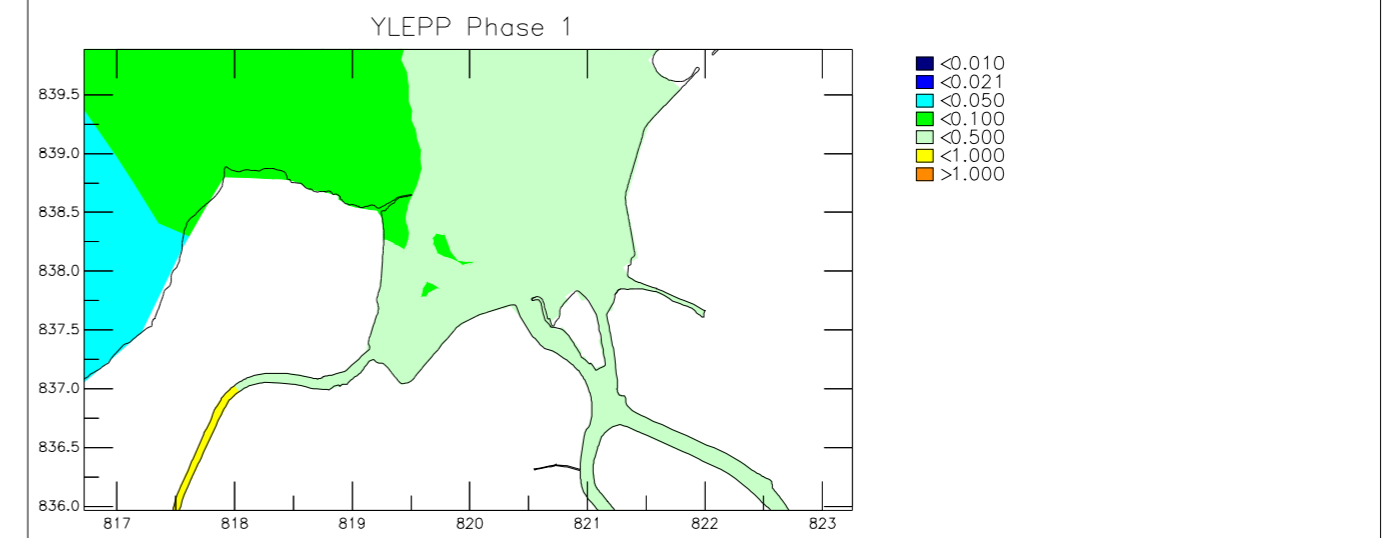
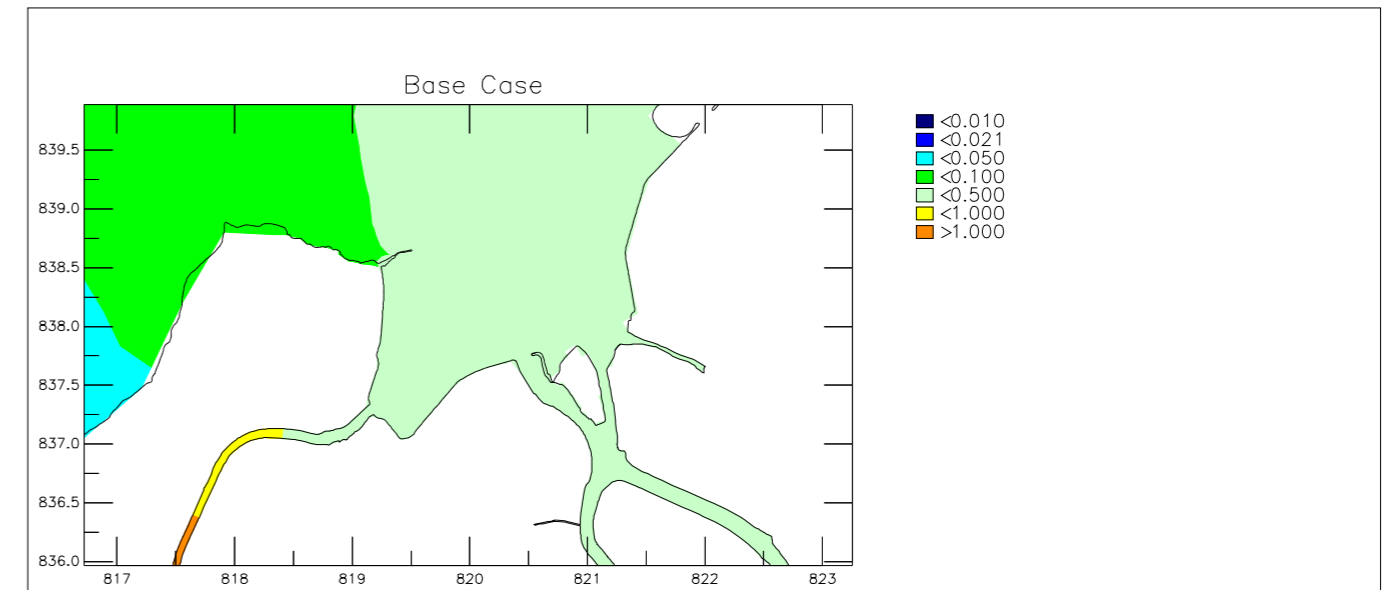
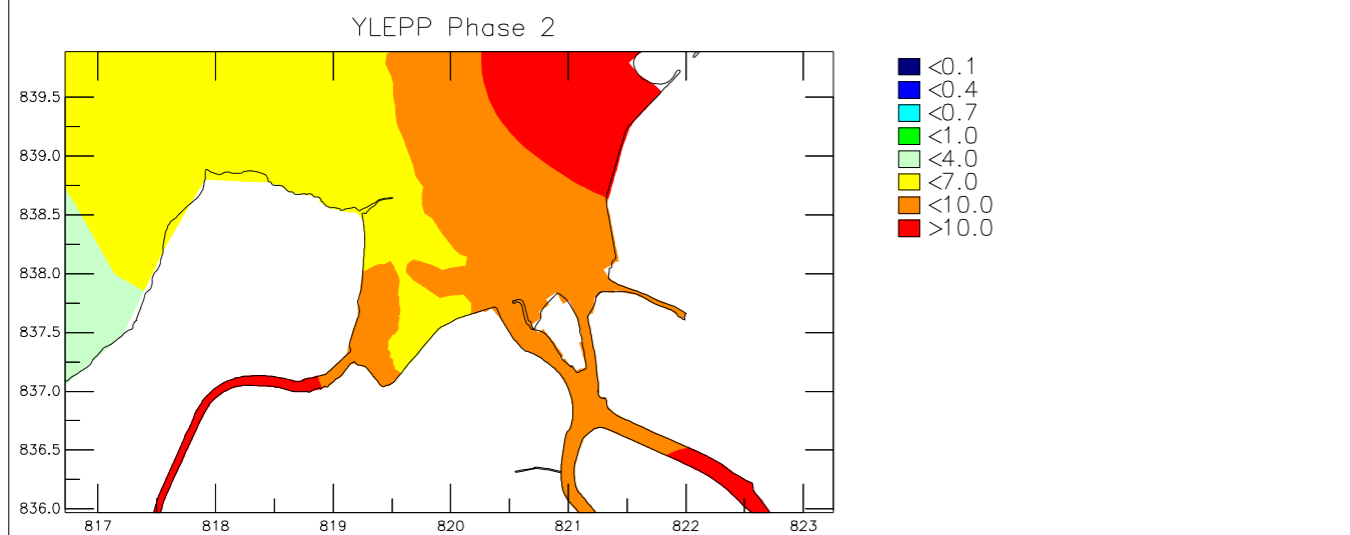
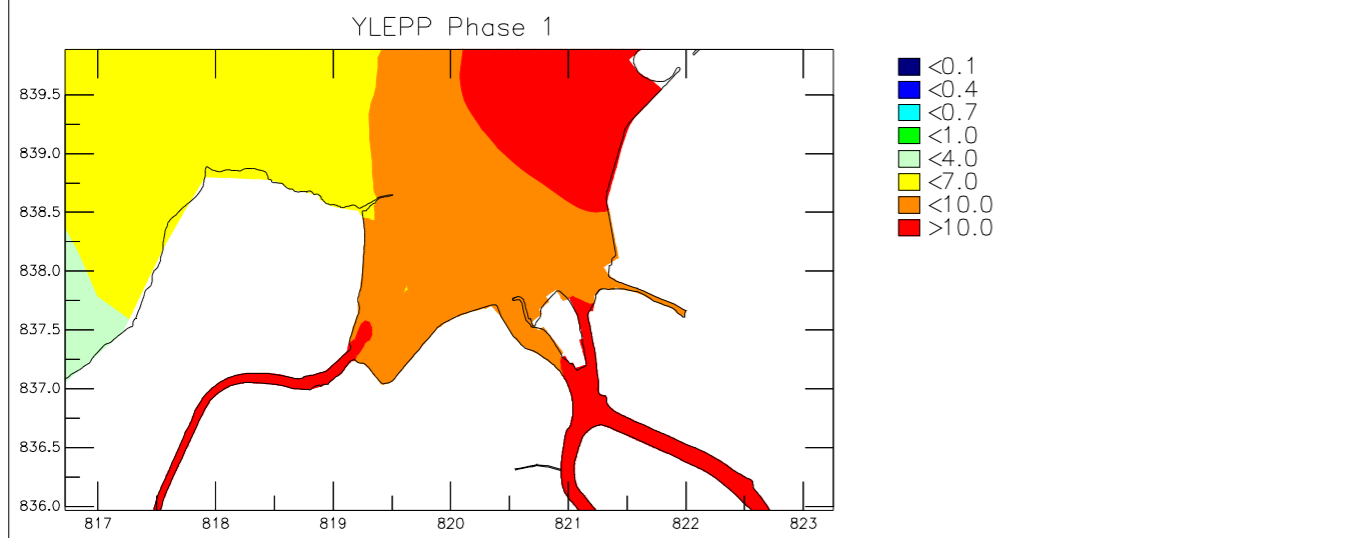
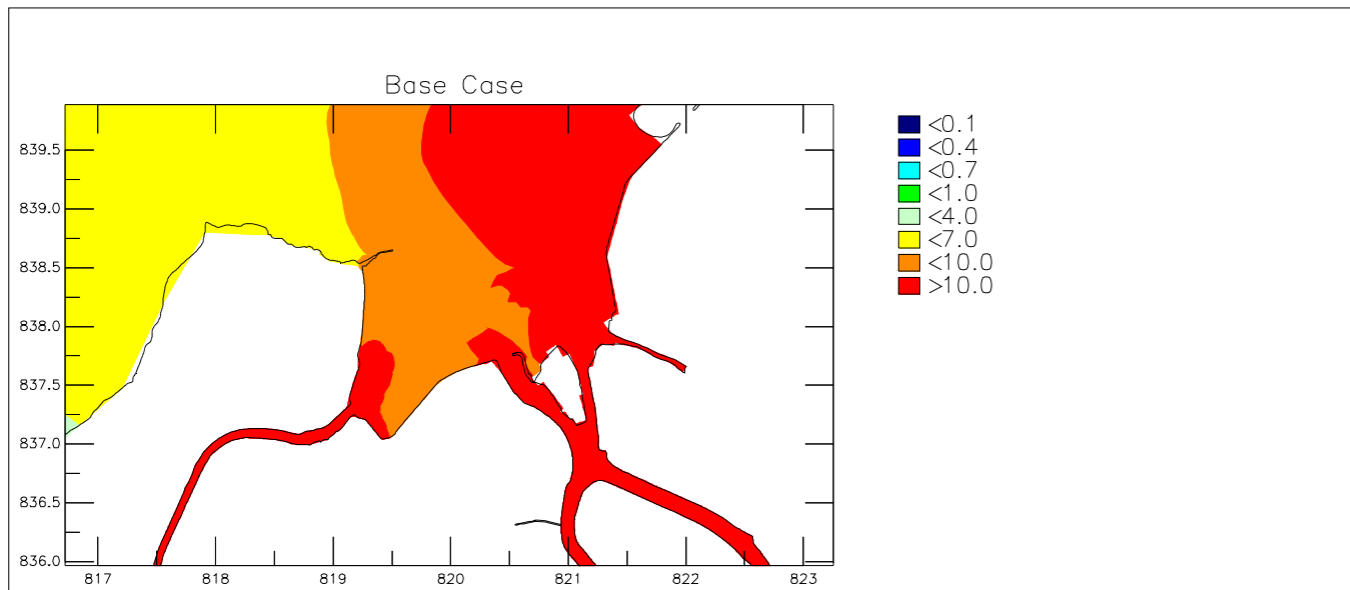


Agreement No. CE 3/2015 (DS) Yuen Long Effluent Polishing Plant Investigation, Design and Construction 10 Percentile Depth Averaged Dissolved Oxygen (mg/L) Scenario: Upper – Base Case; Middle – YLEPP Phase 1; Lower – YLEPP Phase 2		Dry Season
	Appendix 5.2 – 01	
AECOM	/GPP	OpWQ-d.ssn

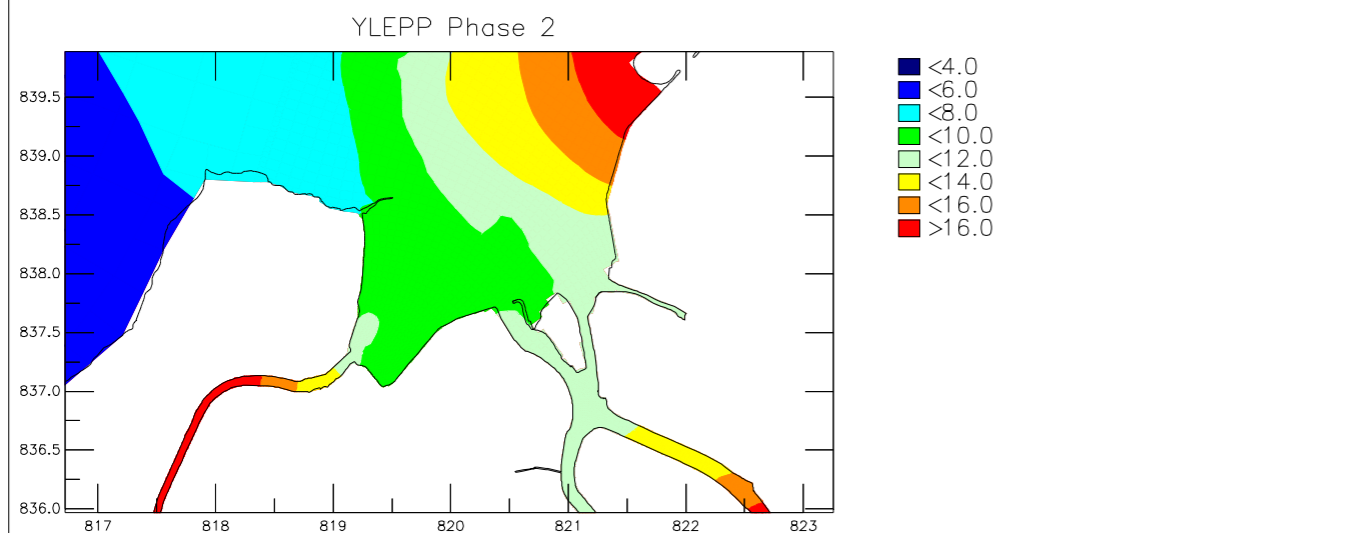
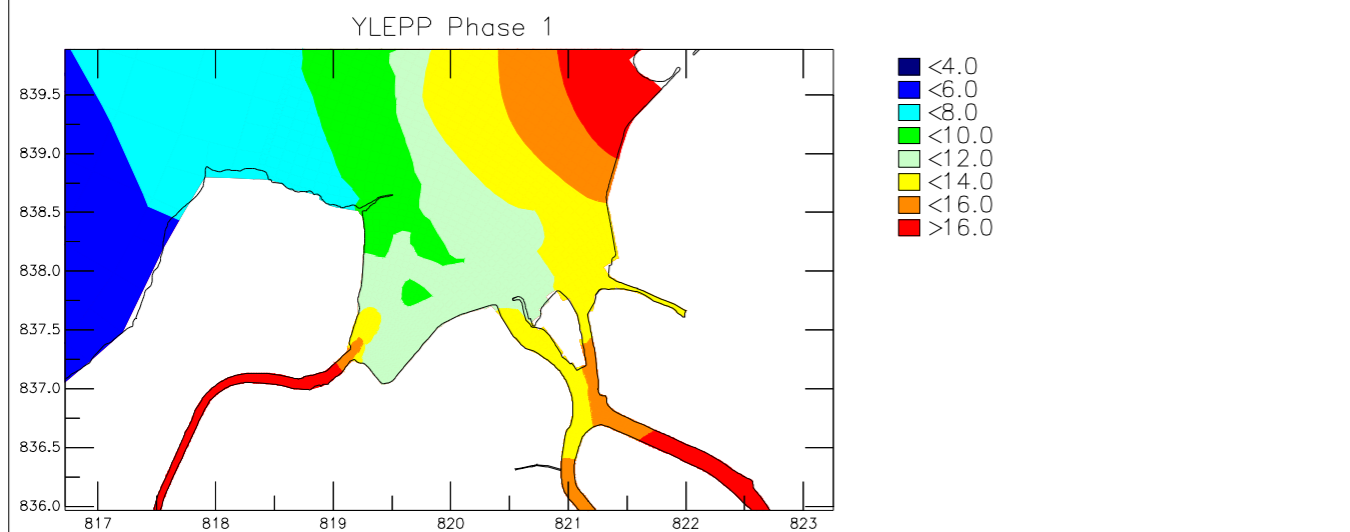
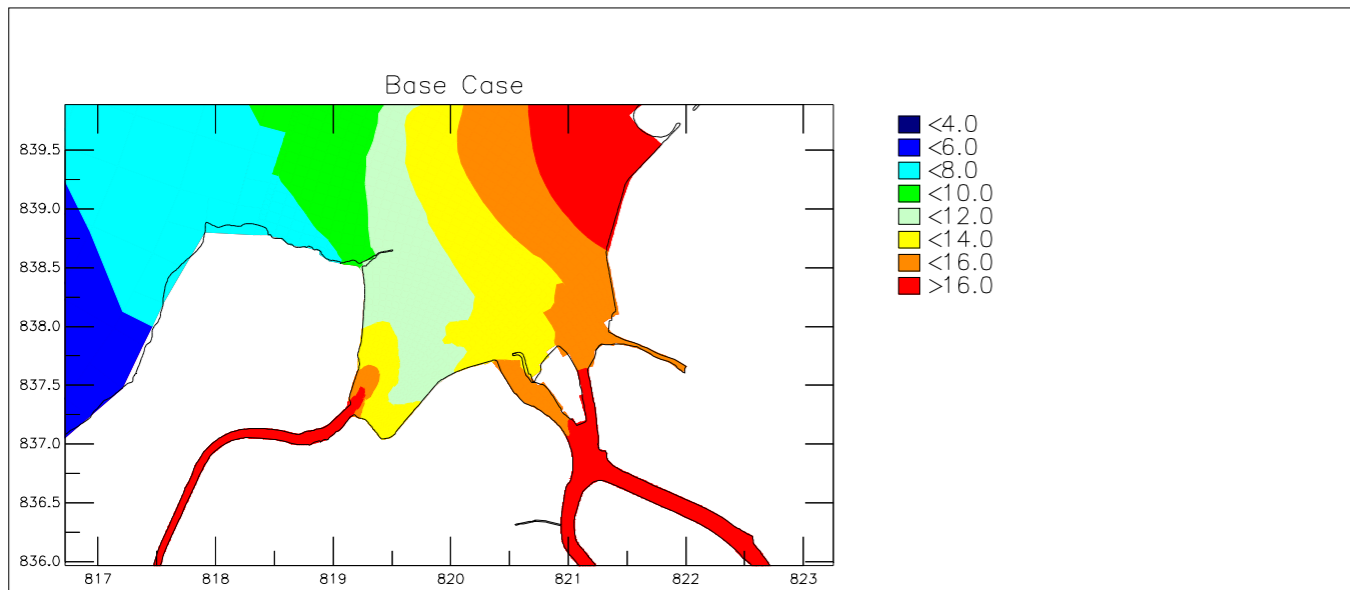


Agreement No. CE 3/2015 (DS) Yuen Long Effluent Polishing Plant Investigation, Design and Construction Mean Depth Averaged 5-Day Biochemical Oxygen Demand (mg/L) Scenario: Upper – Base Case; Middle – YLEPP Phase 1; Lower – YLEPP Phase 2		Dry Season
	Appendix 5.2 – 02	
AECOM	/GPP	OpWQ-d.ssn

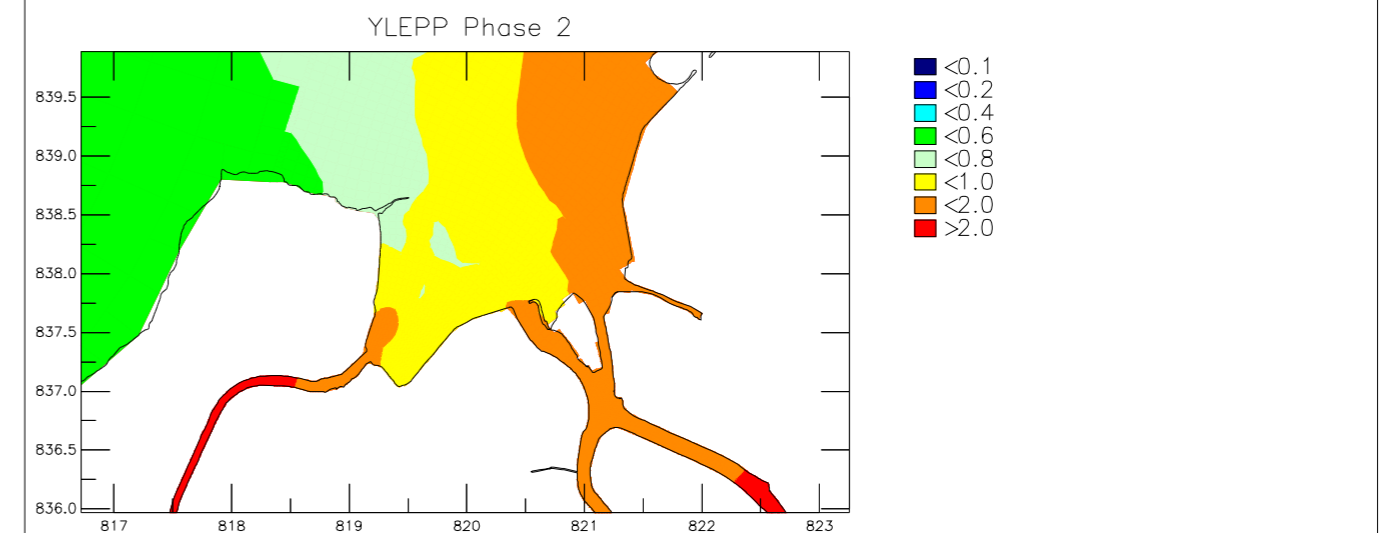
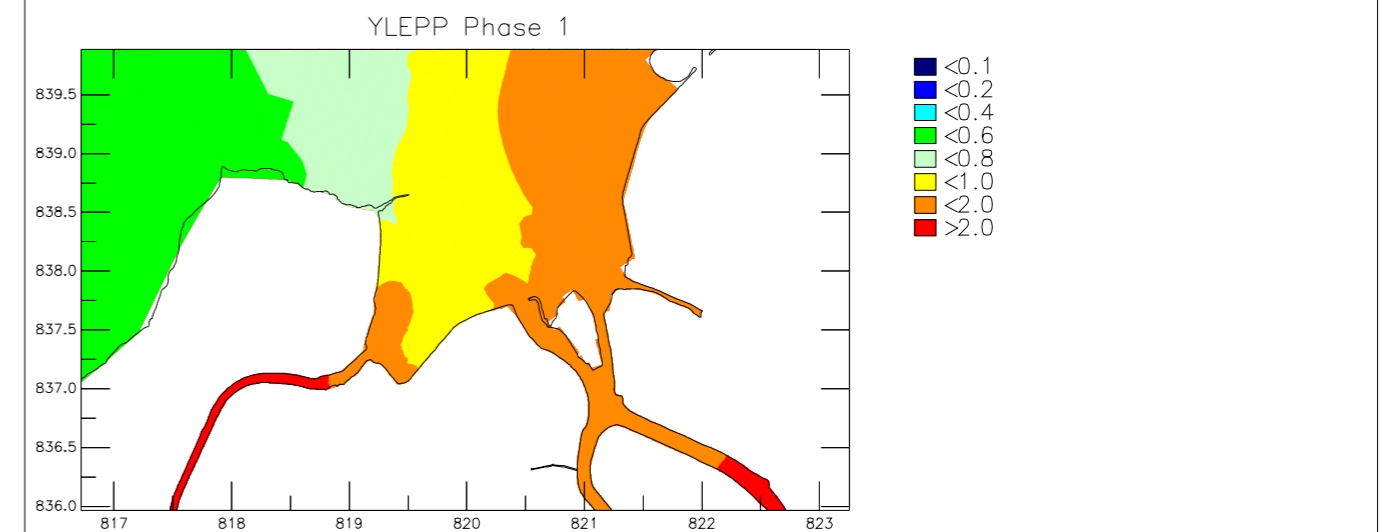
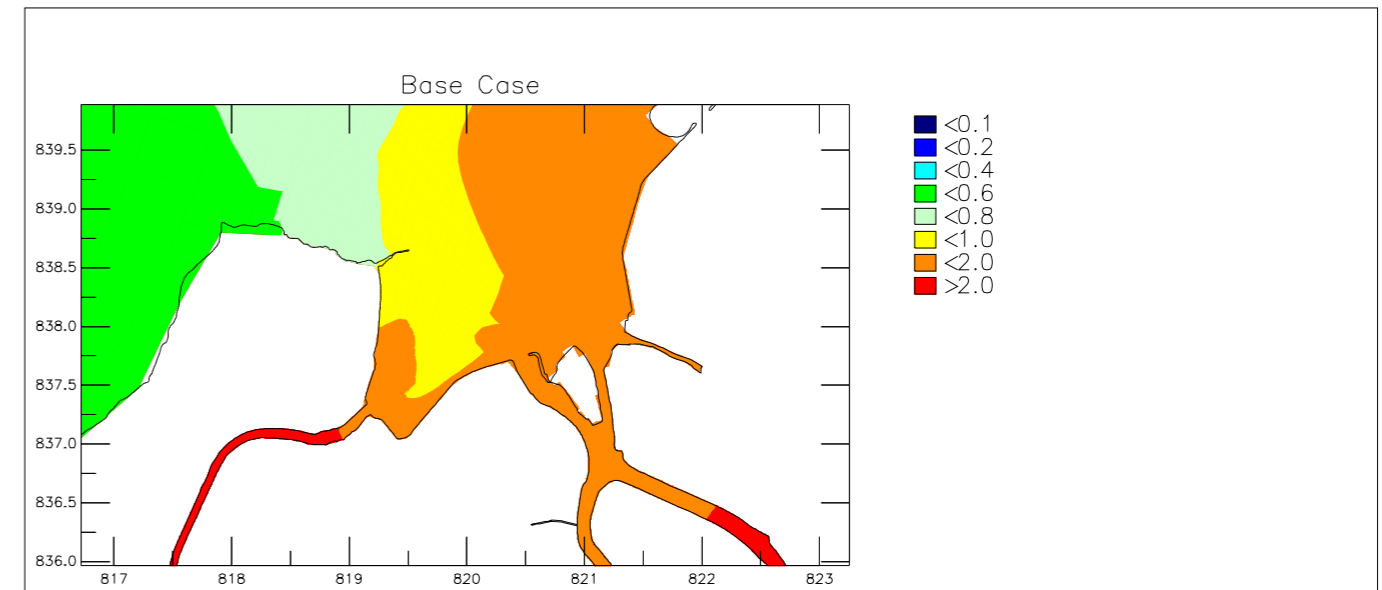


Agreement No. CE 3/2015 (DS)		
Yuen Long Effluent Polishing Plant Investigation, Design and Construction		Dry Season
Mean Depth Averaged Total Inorganic Nitrogen (mg/L)		
Scenario: Upper – Base Case; Middle – YLEPP Phase 1; Lower – YLEPP Phase 2		Appendix 5.2 – 03
AECOM	/GPP	OpWQ-d.ssn

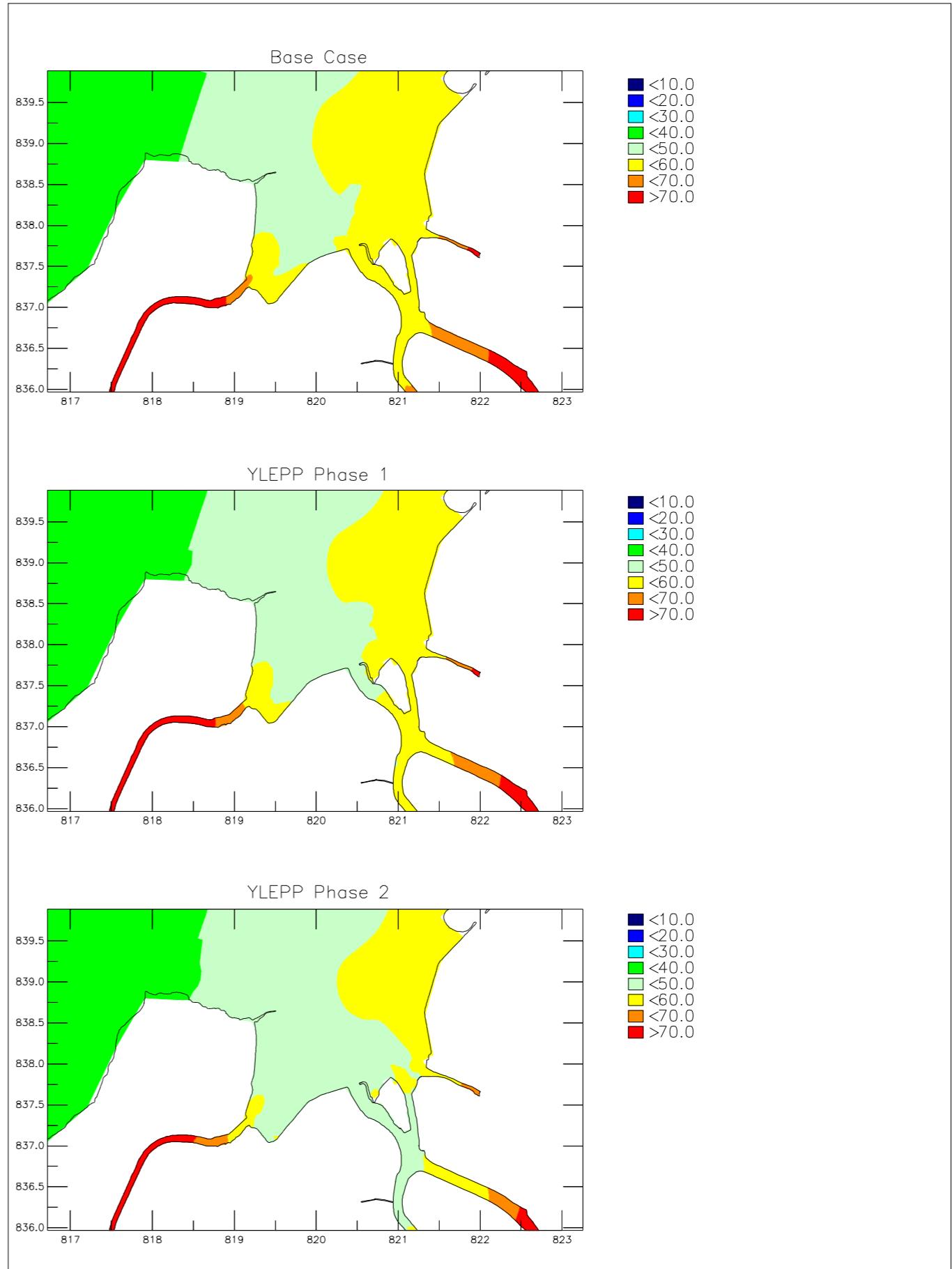
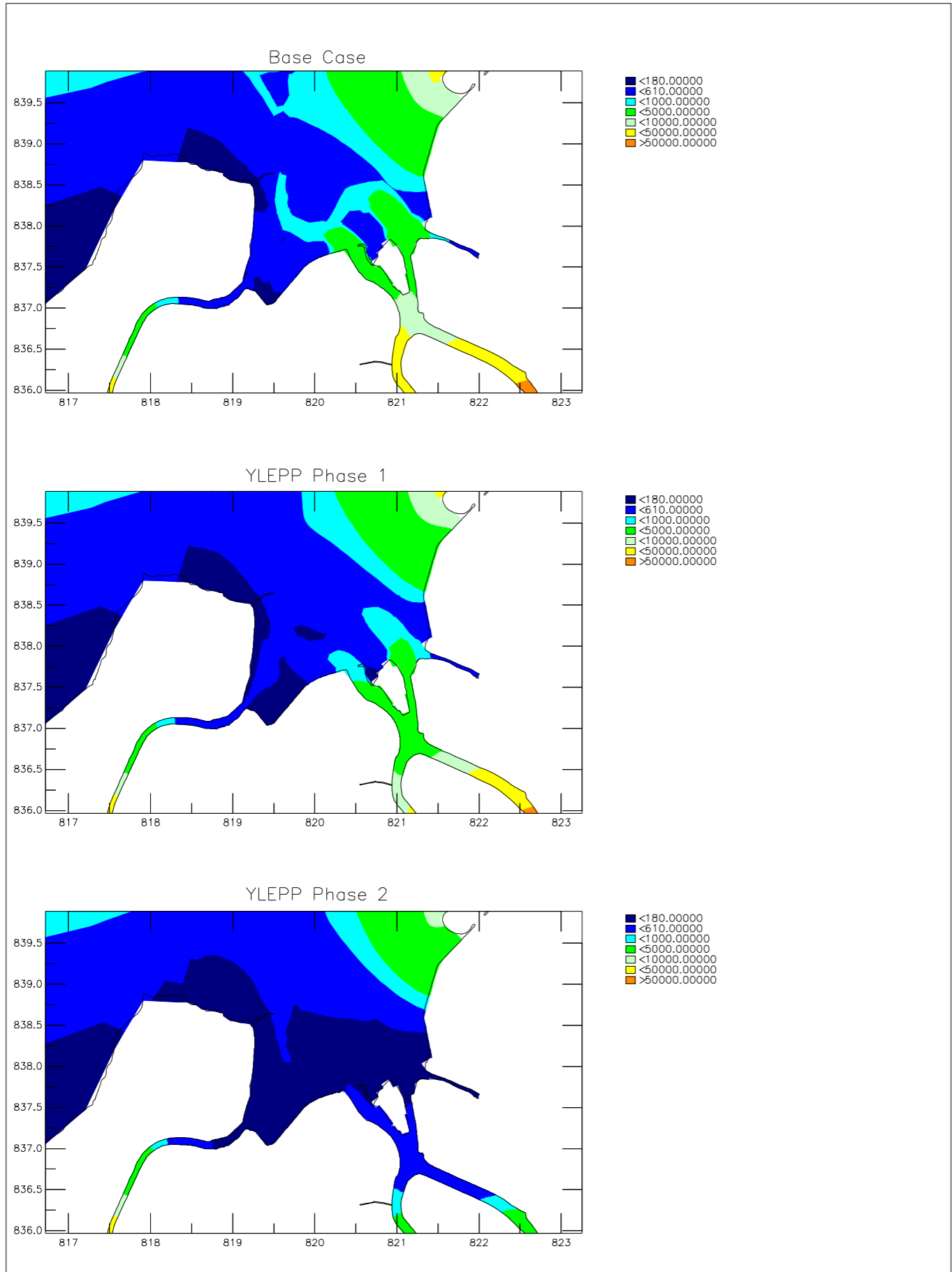
Agreement No. CE 3/2015 (DS)		
Yuen Long Effluent Polishing Plant Investigation, Design and Construction		Dry Season
Mean Depth Averaged Unionised Ammonia (mg/L)		
Scenario: Upper – Base Case; Middle – YLEPP Phase 1; Lower – YLEPP Phase 2		Appendix 5.2 – 04
AECOM	/GPP	OpWQ-d.ssn



Agreement No. CE 3/2015 (DS) Yuen Long Effluent Polishing Plant Investigation, Design and Construction Mean Depth Averaged Total Nitrogen (mg/L) Scenario: Upper – Base Case; Middle – YLEPP Phase 1; Lower – YLEPP Phase 2		Dry Season
Appendix 5.2 – 05		
AECOM	/GPP	OpWQ-d.ssn

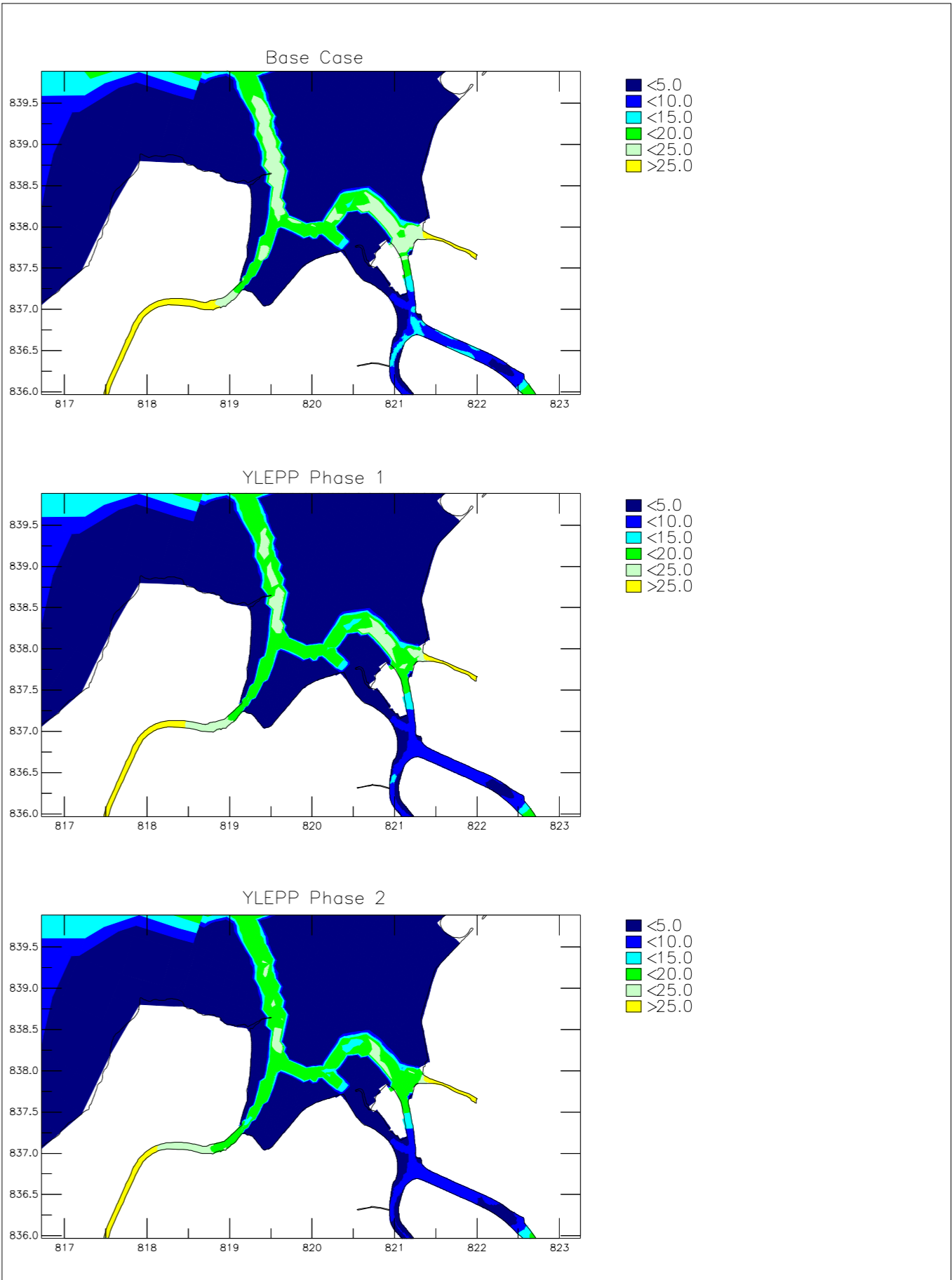
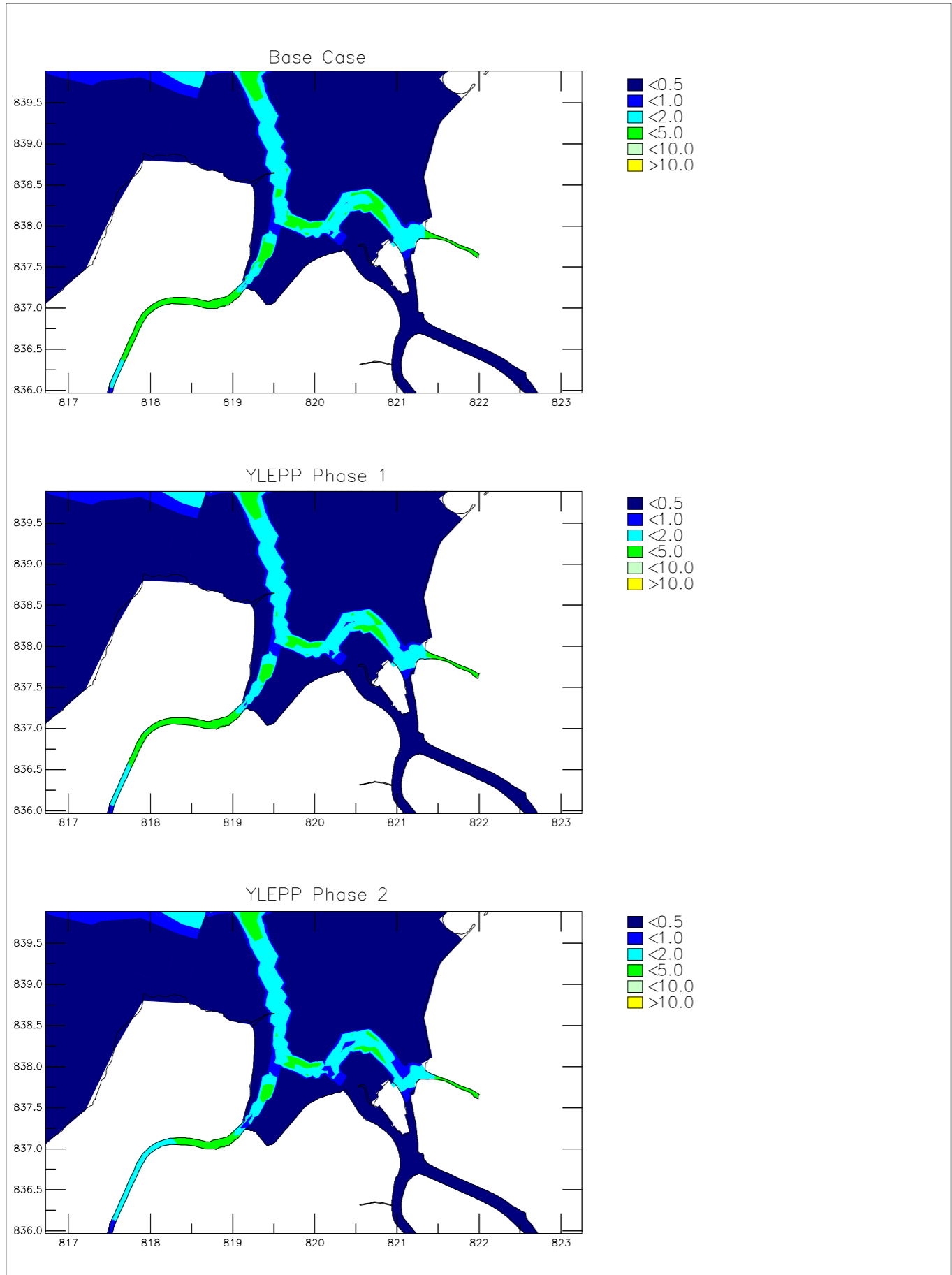


Agreement No. CE 3/2015 (DS) Yuen Long Effluent Polishing Plant Investigation, Design and Construction Mean Depth Averaged Total Phosphorus (mg/L) Scenario: Upper – Base Case; Middle – YLEPP Phase 1; Lower – YLEPP Phase 2		Dry Season
Appendix 5.2 – 06		
AECOM	/GPP	OpWQ-d.ssn



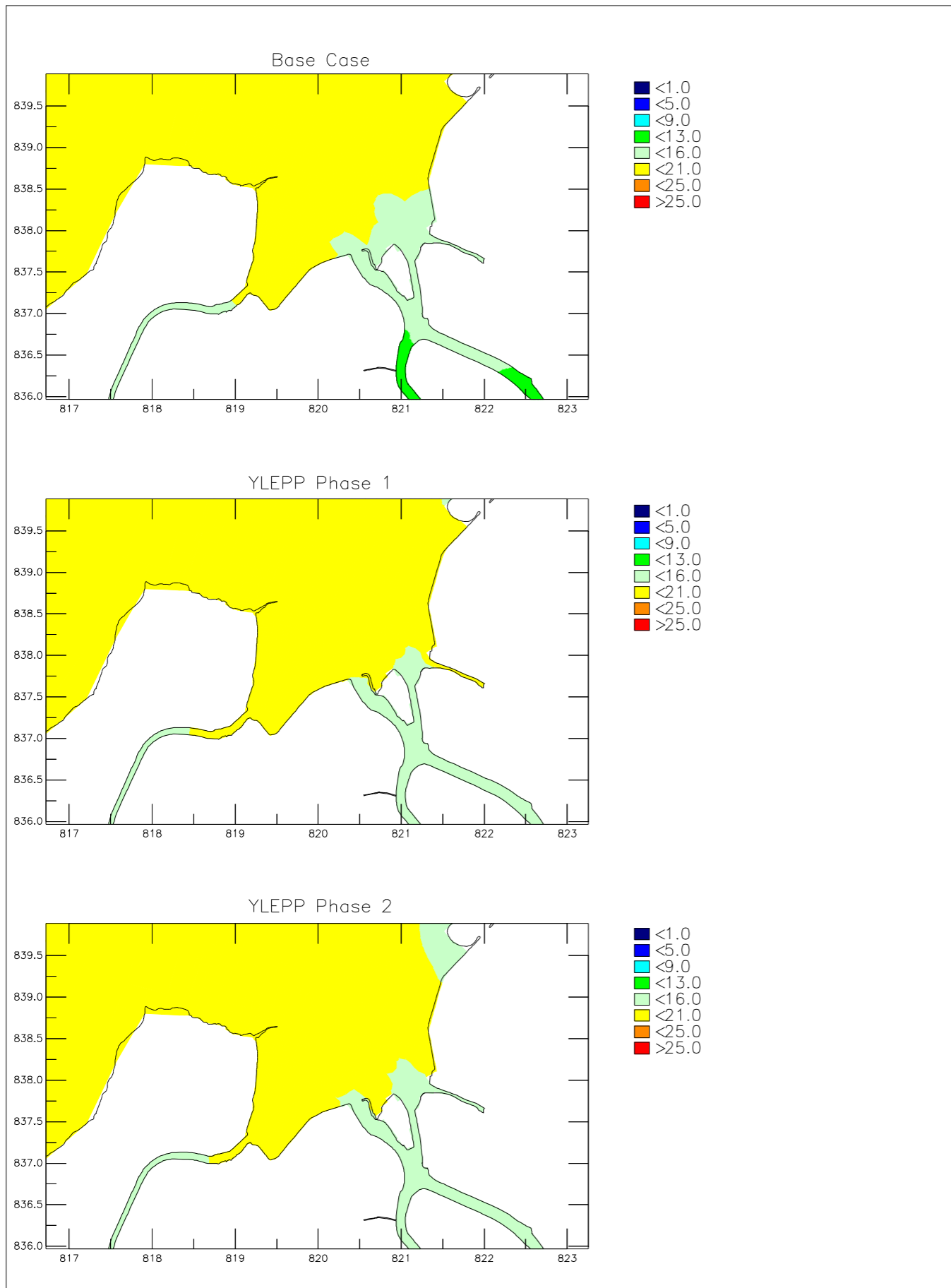
Agreement No. CE 3/2015 (DS) Yuen Long Effluent Polishing Plant Investigation, Design and Construction Geometric Mean Depth Averaged E.coli (no./100mL) Scenario: Upper – Base Case; Middle – YLEPP Phase 1; Lower – YLEPP Phase 2		Dry Season
Appendix 5.2 – 07		
AECOM	/GPP	OpWQ-d.ssn

Agreement No. CE 3/2015 (DS) Yuen Long Effluent Polishing Plant Investigation, Design and Construction Mean Depth Averaged Suspended Solids (mg/L) Scenario: Upper – Base Case; Middle – YLEPP Phase 1; Lower – YLEPP Phase 2		Dry Season
Appendix 5.2 – 08		
AECOM	/GPP	OpWQ-d.ssn



Agreement No. CE 3/2015 (DS) Yuen Long Effluent Polishing Plant Investigation, Design and Construction Mean Sedimentation Rate ( $\text{g}/\text{m}^2/\text{day}$ ) Scenario: Upper – Base Case; Middle – YLEPP Phase 1; Lower – YLEPP Phase 2		Dry Season
Appendix 5.2 – 09		
AECOM		/GPP OpWQ-d.ssn

Agreement No. CE 3/2015 (DS) Yuen Long Effluent Polishing Plant Investigation, Design and Construction Maximum Sedimentation Rate ( $\text{g}/\text{m}^2/\text{day}$ ) Scenario: Upper – Base Case; Middle – YLEPP Phase 1; Lower – YLEPP Phase 2		Dry Season
Appendix 5.2 – 10		
AECOM		/GPP OpWQ-d.ssn



<p>Agreement No. CE 3/2015 (DS) Yuen Long Effluent Polishing Plant Investigation, Design and Construction Mean Depth Averaged Salinity</p>		Dry Season
<p>Scenario: Upper – Base Case; Middle – YLEPP Phase 1; Lower – YLEPP Phase 2</p>	Appendix 5.2 – 11	
<p>AECOM</p>	/GPP	OpWQ-d.ssn